

List of pages in this Trip Kit

Trip Kit Index

Airport Information For EGQK

Terminal Charts For EGQK

Revision Letter For Cycle 21-2020

Change Notices

Notebook

General Information

Location: KINLOSS GBR
ICAO/IATA: EGQK / FSS
Lat/Long: N57° 39.0', W003° 33.6'
Elevation: 22 ft

Airport Use: Military
Daylight Savings: Observed
UTC Conversion: +0:00 = UTC
Magnetic Variation: 2.0° W

Customs: No
Airport Type: IFR
Landing Fee: No
Control Tower: Yes
Jet Start Unit: No
LLWS Alert: No
Beacon: Yes

Sunrise: 0652 Z
Sunset: 1707 Z

Runway Information

Runway: 07
Length x Width: 7792 ft x 148 ft
Surface Type: asphalt
TDZ-Elev: 17 ft
Lighting: Edge, ALS

Runway: 25
Length x Width: 7792 ft x 148 ft
Surface Type: asphalt
TDZ-Elev: 22 ft
Lighting: Edge, ALS

Communication Information

ATIS: 36.915 Military
Kinloss Tower: 122.100
Kinloss Ground: 27.722 Military
Lossie Approach: 36.277 Military
Lossie Approach: 123.300
Lossie Approach: 31.515 Military
Lossie Departure: 30.885 Military
Lossie Departure: 119.575

EGQK / FSS

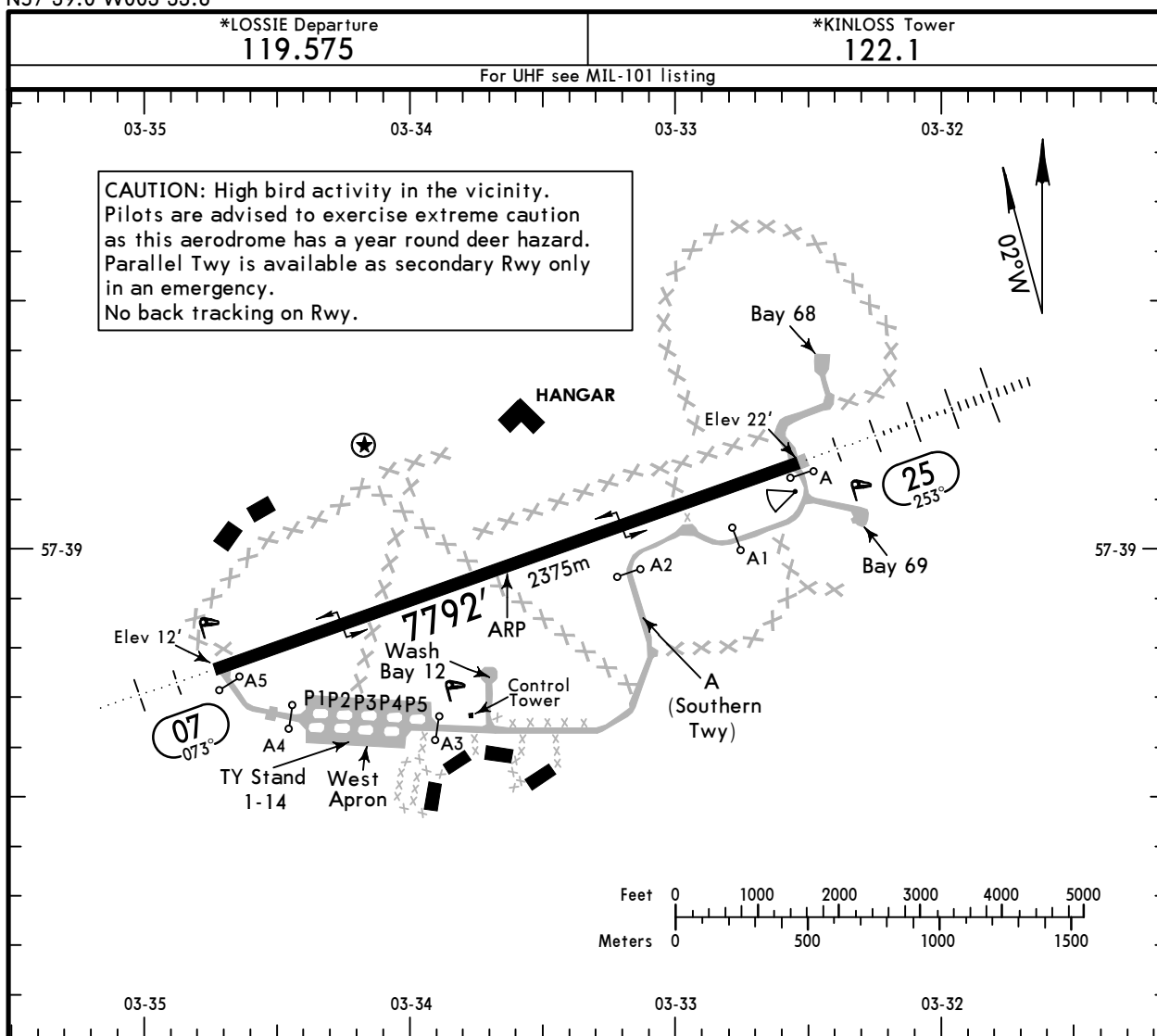
Apt Elev **22'**
N57 39.0 W003 33.6

JEPPESEN

21 FEB 20 **(10-9)** Eff 27 Feb

KINLOSS, UK

KINLOSS



ADDITIONAL RUNWAY INFORMATION							
RWY					USABLE LENGTHS		
					LANDING BEYOND		
				Threshold	Glide Slope	TAKE-OFF	WIDTH
07 ① 25	② HIRL (30m)	HIALS	PAPI (angle 3.0°)	RVR	③	7612' 2320m	148' 45m

① Porous friction course with concrete at both thresholds.
 ② RL (90m) also available
 ③ LDA 7612' (2320m)

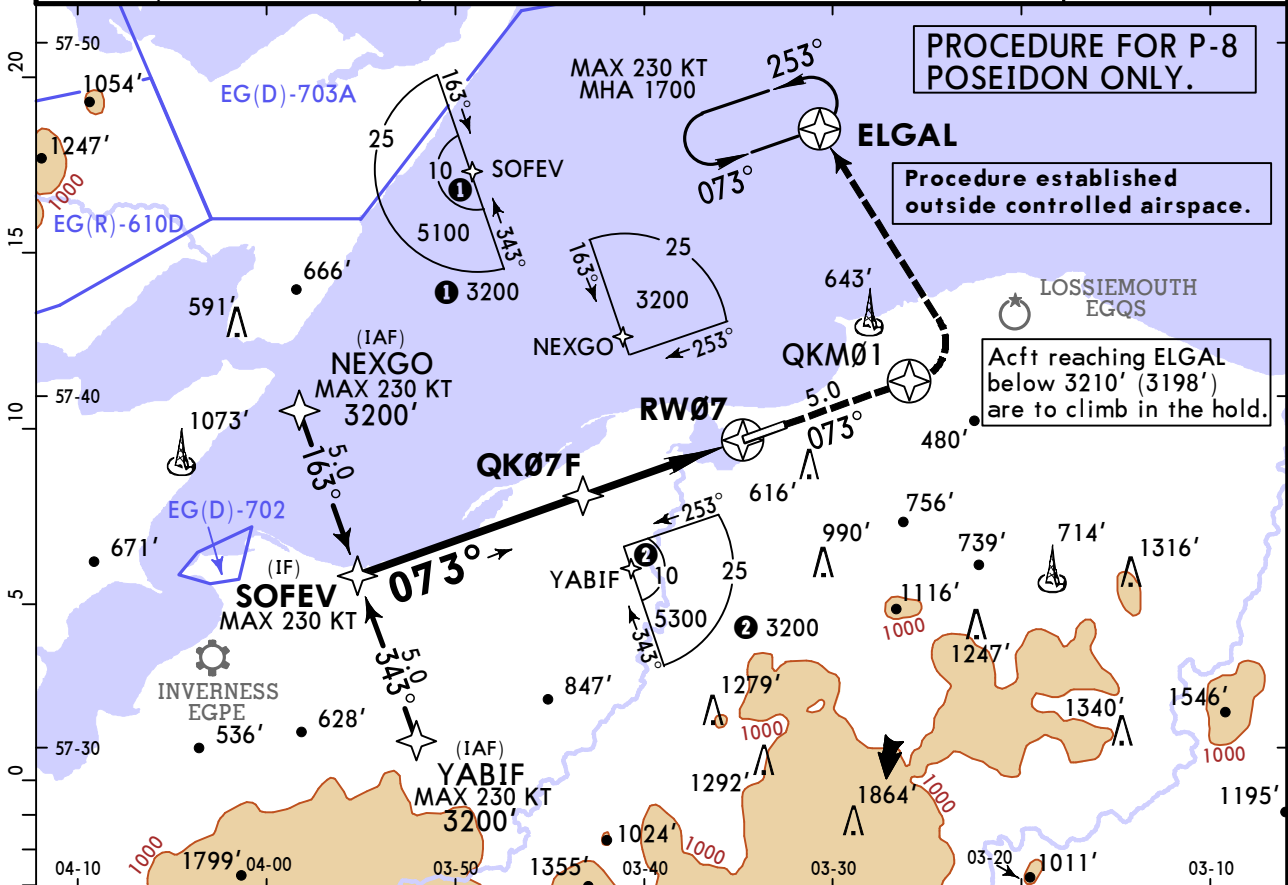
	TAKE-OFF		
	Low Visibility Take-off		
A	Day: RL & RCLM Night: RL	Day: RL or RCLM Night: RL	Adequate vis ref (Day only)
B	NOT APPLICABLE		
C			
D	350m	400m	500m

EGQK / FSS
KINLOSS

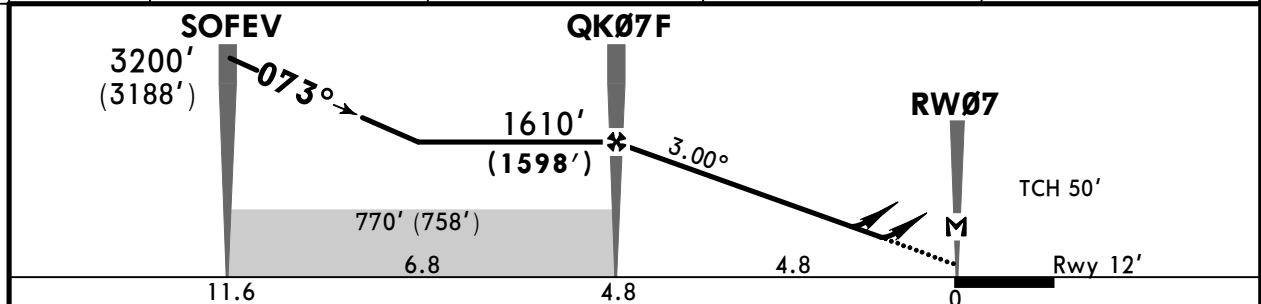
JEPPESEN
20 MAR 20
Eff 26 Mar 12-1 CAT D

KINLOSS, UK
RNAV (GNSS) Rwy 07

*LOSSIE Approach 123.3			*KINLOSS Tower 122.1		
For UHF see MIL-101 listing					
RNAV	Final Apch Crs 073°	QK07F 1610' (1598')	LNAV/VNAV MDA(H) 392' (380')	Apt Elev 22'	Rwy 12'
MISSED APCH: Climb STRAIGHT AHEAD to QKM01, then climbing turn LEFT to ELGAL and hold at 3210' (3198'). MAX 220 KT.					
Alt Set: hPa QNH (QFE on Final Apch) Trans level: By ATC Trans alt: 3000'					
For uncompensated LNAV/VNAV: procedure not authorized below -15°C.					
					MSA ARP



DIST to RW07	5.0	4.0	3.0	2.0
ALT (HAT)	1670' (1658')	1350' (1338')	1030' (1018')	710' (698')



Gnd speed-Kts	70	90	100	120	140	160	HIALS PAPI PAPI 220 KT MAX QKM01 ↑	
Descent Angle	3.00°	372	478	531	637	743		849
LNAV/VNAV: MAP at MDA								
LNAV: MAP at RW07								

Standard STRAIGHT-IN LANDING RWY 07				CIRCLE-TO-LAND			
LNAV/VNAV		LNAV CDFA				North of rwy 07/25	
MDA(H) 392' (380')		MDA(H) 510' (498')					
ALS out		ALS out		Max Kts		MDA(H) VIS MDA(H) VIS	
A				A			
B	NOT APPLICABLE	NOT APPLICABLE		B	NOT APPLICABLE		
C				C			
D	1400m	1800m	1900m	2300m	205	1400' (1378') 3600m	1050' (1028') 3600m

CHANGES: None.

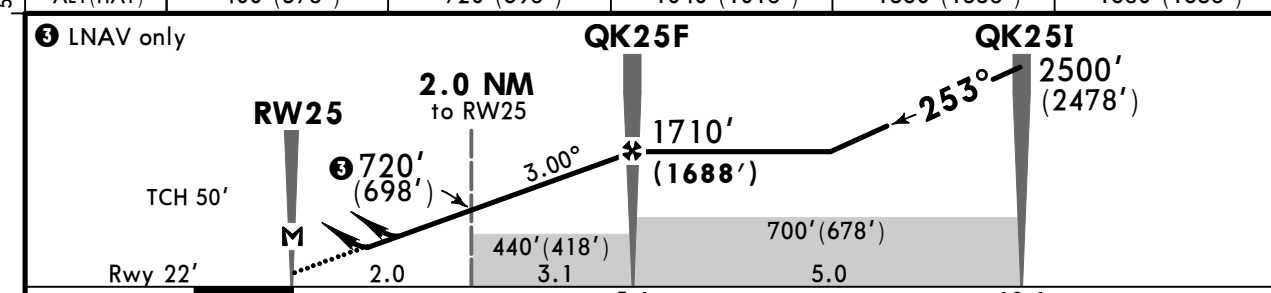
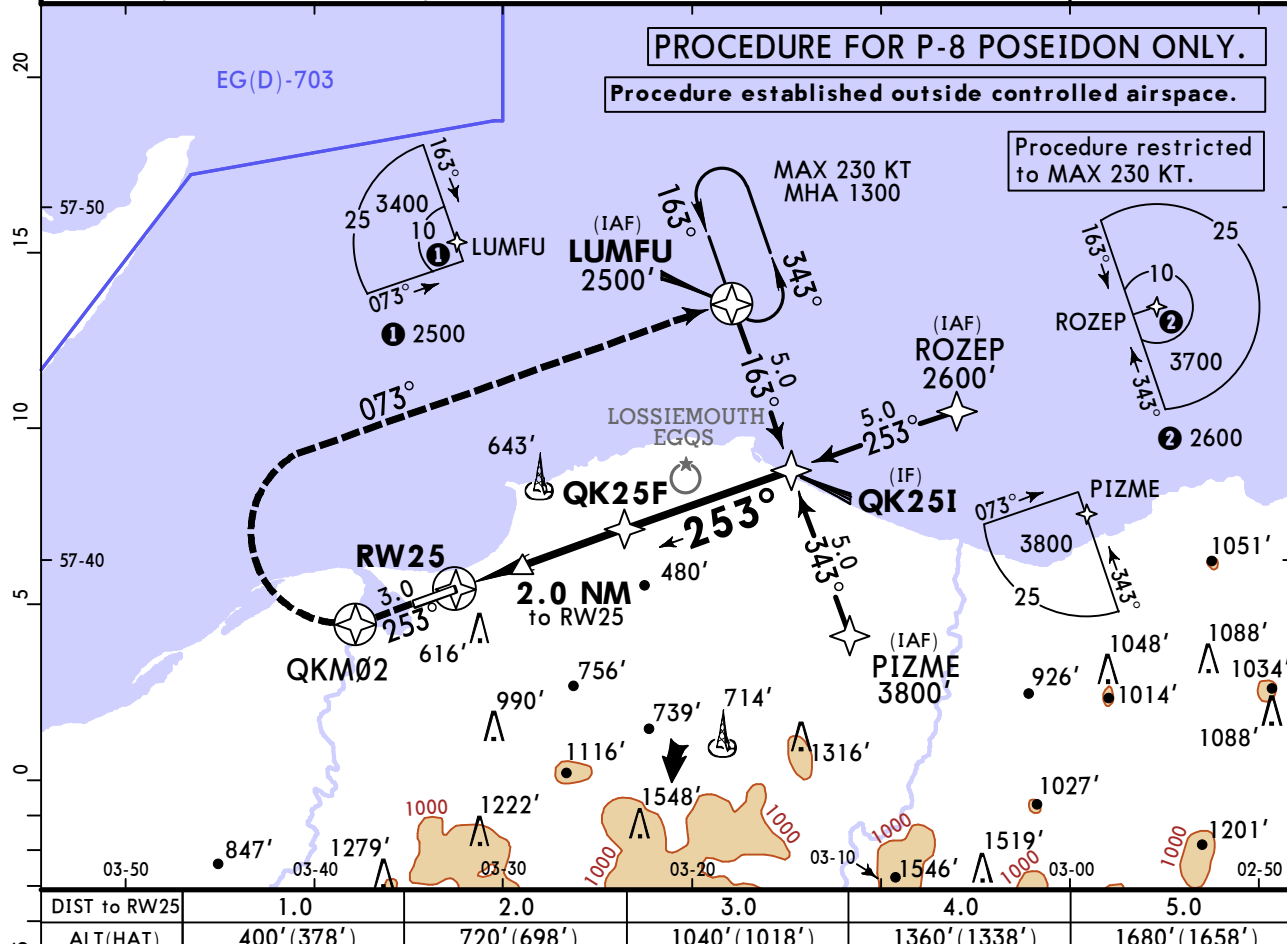
© JEPPESEN, 2020. ALL RIGHTS RESERVED.

EGQK / FSS
KINLOSS

JEPPesen
20 MAR 20
Eff 26 Mar (12-2) CAT D

KINLOSS, UK
RNAV (GNSS) Rwy 25

*LOSSIE Approach 123.3			*KINLOSS Tower 122.1		
For UHF see MIL-101 listing					
RNAV	Final Apch Crs 253°	QK25F 1710' (1688')	LNAV/VNAV MDA(H) 322' (300')	Apt Elev 22'	
MISSED APCH: Climb STRAIGHT AHEAD to QKM02, then climbing turn RIGHT on track 073° to LUMFU and hold at 2510' (2488').					
Alt Set: hPa QNH (QFE on Final Apch) Trans level: By ATC Trans alt: 3000'					
For uncompensated LNAV/VNAV: procedure not authorized below -15°C.					
MSA ARP					



Gnd speed-Kts	70	90	100	120	140	160	HIALS PAPI PAPI
Descent Angle	3.00°	372	478	531	637	849	
LNAV/VNAV: MAP at MDA							
LNAV: MAP at RW25							

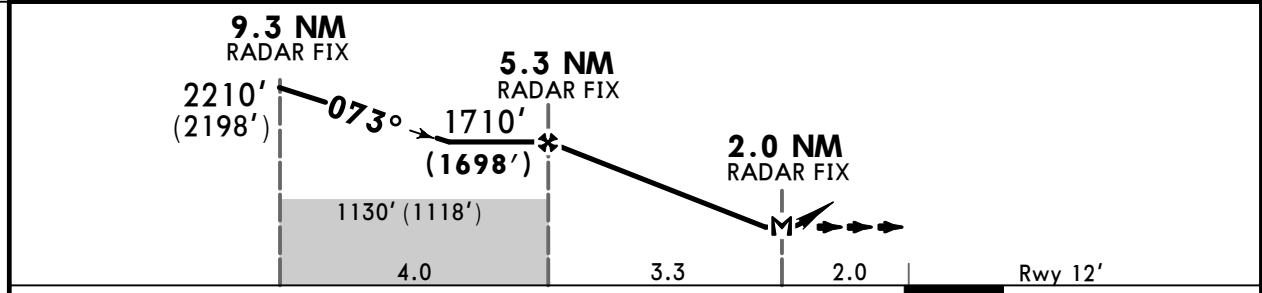
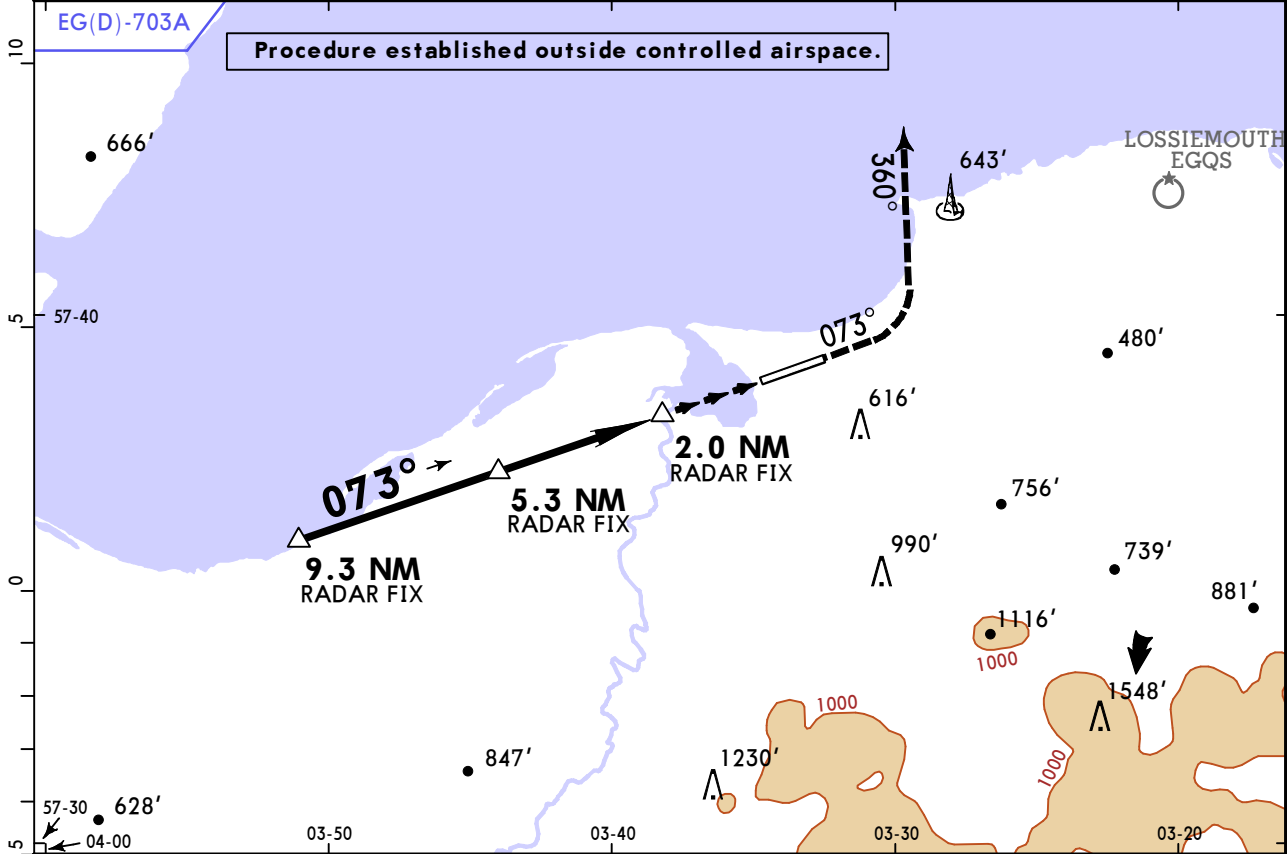
Standard					STRAIGHT-IN LANDING RWY 25				CIRCLE-TO-LAND			
LNAV/VNAV		LNAV CDFA		Max Kts	MDA(H)		VIS		MDA(H)		VIS	
MDA(H) 322' (300')		MDA(H) 400' (378')										
ALS out		ALS out										
A	NOT APPLICABLE		NOT APPLICABLE		A							
B	NOT APPLICABLE		NOT APPLICABLE		B							
C	NOT APPLICABLE		NOT APPLICABLE		C							
D	800m	1500m	1000m	1800m	205	1400' (1378') 3600m		1050' (1028') 3600m				

EGQK / FSS
KINLOSS

JEPPESEN
21 FEB 20
Eff 27 Feb **(18-1)** **CAT D**

KINLOSS, UK
SRA Rwy 07

*LOSSIE Approach 123.3				*KINLOSS Tower 122.1						
For UHF see MIL-101 listing										
BRIEFING STRIP™	RADAR	Final Apch Crs 073°	5.3 NM RADAR FIX 1710' (1698')	MDA(H) Refer to Minimums	Apt Elev 22'					
	MISSED APCH: Climb on rwy track to 1510' (1498'), then turn LEFT on track 360° climbing to 3910' (3898'), or as directed. Do not turn before MAP.							Apt Elev 22'	Rwy 12'	
CAUTION: Missed apch requires minimum climb of 305'/NM to 1510' (1498').		Gnd speed-Kts	80	120	150	180	210	250	300	
		V/V	fpm	410	610	760	910	1060	1270	1510
Alt Set: hPa		QNH (QFE on Final Apch)			Trans level: By ATC		Trans alt: 3000'			



Gnd speed-Kts	70	90	100	120	140	160	HIALS PAPI PAPI	1510' (1498')
Descent Angle	3.00°	372	478	531	637	743		
MAP at 2.0 NM RADAR FIX								

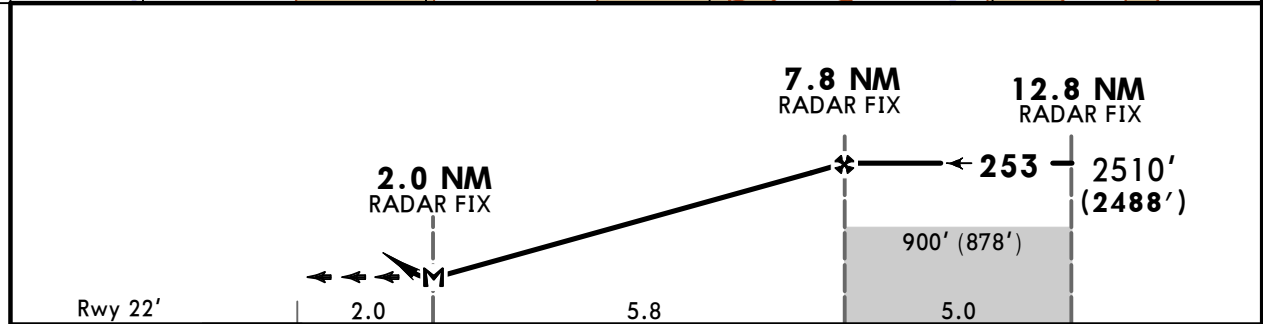
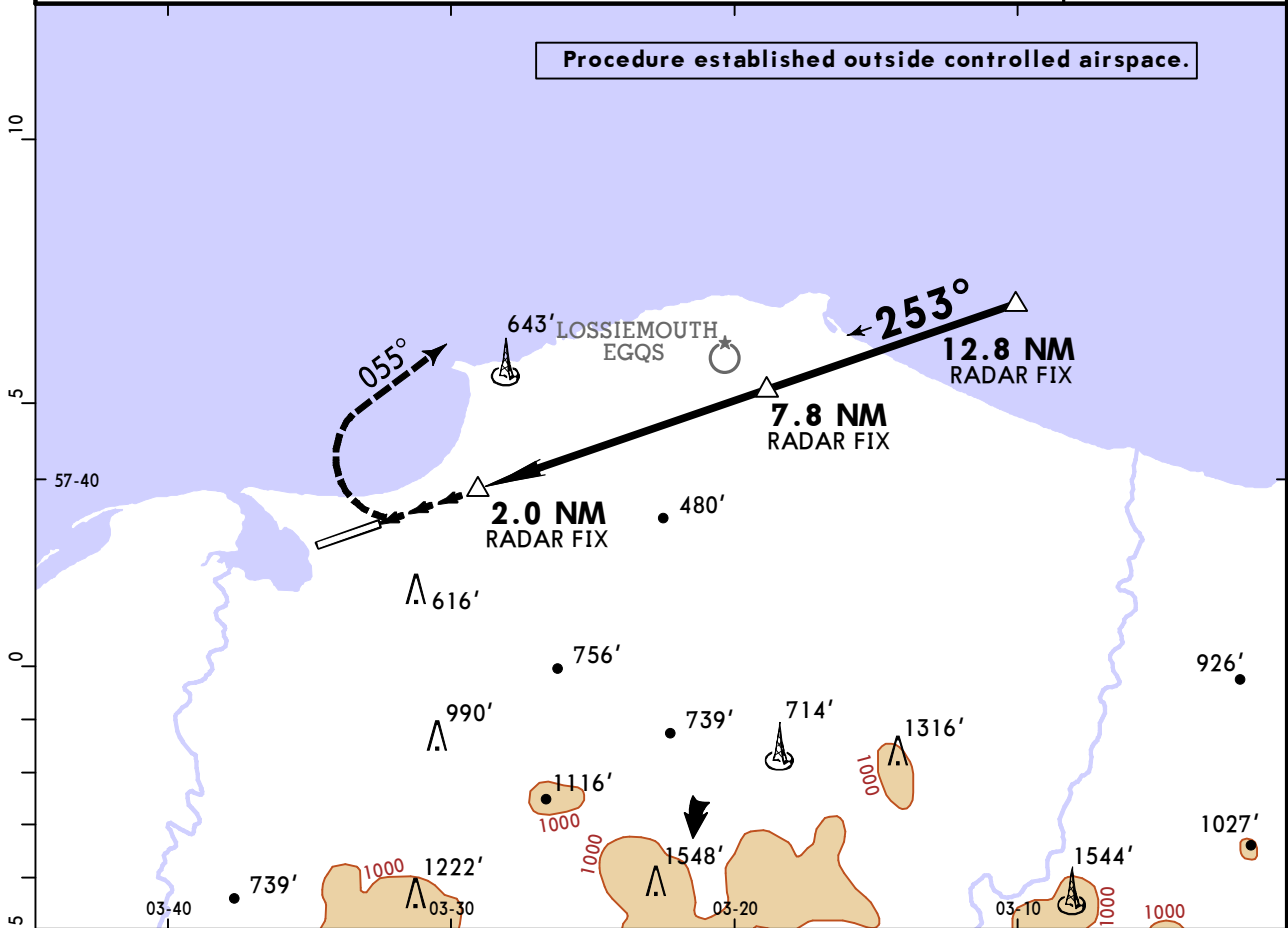
MIPS	Standard STRAIGHT-IN LANDING RWY 07				CIRCLE-TO-LAND			
	MACG mim 5.0% (305'/NM) to 1510' (1498')		MACG mim 2.5% (152'/NM)		North of rwy 07/25			
	CDFA		CDFA		MDA(H)		MDA(H)	
	MDA(H) 660' (648')		MDA(H) 690' (678')		ALS out		ALS out	
	A		A		Max Kts		Max Kts	
B		B		MDA(H)		MDA(H)		
C		C		VIS		VIS		
D		D		205		205		
2600m		3000m		2700m		3100m		
1400' (1378')		3600m		1050' (1028')		3600m		

EGQK / FSS
KINLOSS

JEPPESEN
21 FEB 20
Eff 27 Feb (18-2) CAT D

KINLOSS, UK
SRA Rwy 25

*LOSSIE Approach 123.3				*KINLOSS Tower 122.1	
For UHF see MIL-101 listing					
RADAR	Final Apch Crs 253°	7.8 NM RADAR FIX 2510' (2488')	MDA(H) 670' (648')	Apt Elev 22'	Rwy 22'
MISSED APCH: Climb on rwy track to 1010' (988'), then turn RIGHT on track 055° climbing to 3910' (3888'), or as directed. Do not turn before MAP.					
Alt Set: hPa	QNH (QFE on Final Apch)	Trans level: By ATC	Trans alt: 3000'	MSA ARP	



Gnd speed-Kts	70	90	100	120	140	160	HIALS 	1010' (988')
Descent Angle	3.00°	372	478	531	637	743		
MAP at 2.0 NM RADAR FIX								

MIPS	Standard				STRAIGHT-IN LANDING RWY 25				CIRCLE-TO-LAND				
	CDFA				MDA(H) 670' (648')				North of rwy 07/25				
	ALS out				Max Kts	MDA(H)	VIS	MDA(H)	VIS				
	A	NOT APPLICABLE				A	NOT APPLICABLE						
B	NOT APPLICABLE				B	NOT APPLICABLE							
C	NOT APPLICABLE				C	NOT APPLICABLE							
D	2300m	3000m		205	1400' (1378')	3600m	1050' (1028')	3600m					

CHANGES: Tower frequency added.

© JEPPESEN, 2020. ALL RIGHTS RESERVED.

Chart changes since cycle 20-2020

ADD = added chart, REV = revised chart, DEL = deleted chart.

ACT	PROCEDURE IDENT	INDEX	REV DATE	EFF DATE
KINLOSS, (KINLOSS - EGQK)				

TERMINAL CHART CHANGE NOTICES

No Chart Change Notices for Airport EGQK

Chart Change Notices for Country GBR

Type: Gen Tmnl

Effectivity: Permanent

Begin Date: Immediately

End Date: No end date

The following Take-off minima according to Commission Regulation No. 965/2012 (EASA Air Operations Regulation) are applicable for Low Visibility Take-off Operations within the UK FIR for CAT ABCD aircraft: 1. With RL and RCLM during day or with RL or CL during night: RVR 300m 2. With RL and CL: RVR 200m 3. With RL and CL and TDZ, MID and RO RVR: RVR 150m 4. With HIRL and CL and TDZ, MID and RO RVR: RVR 125m 5. On CAT III RWYs with approved guidance system or HUD/HUDLS: RVR 75m